



# EWSTP

## Exposed Wire Standard Test Piece

### Security X-ray Test Piece

EWSTP is a routine test piece designed specifically for use with dual-view security x-ray imaging systems. EWSTP can be used quickly and easily on a routine basis to provide an ongoing check of imaging performance, particularly those aspects which are most liable to deterioration. Image quality is measured simply by counting the number of details detected or resolved in the image. Recording these numbers over time will show any trend suggesting deterioration in imaging performance.

<b>Test 1</b>	Single wire resolution
<b>Test 2</b>	Spatial resolution
<b>Test 3</b>	Thin material imaging
<b>Test 4</b>	Steel penetration
<b>Test 5</b>	Powder discrimination

The EWSTP is supplied in a protective case with user manual and a log sheet.





# EWSTP

## Exposed Wire Standard Test Piece

### Security X-ray Test Piece



fig. 1 EWSTP - lid open

# EWSTP

## Exposed Wire Standard Test Piece

### Security X-ray Test Piece





YORK  
TEST  
PIECES

# EWSTP

## Exposed Wire Standard Test Piece

### Security X-ray Test Piece



fig. 3 EWSTP - case open



YORK  
TEST  
PIECES

# EWSTP

## Exposed Wire Standard Test Piece

### Security X-ray Test Piece



fig.4 EWSTP - carry case



# EWSTP

## Exposed Wire Standard Test Piece

### Security X-ray Test Piece

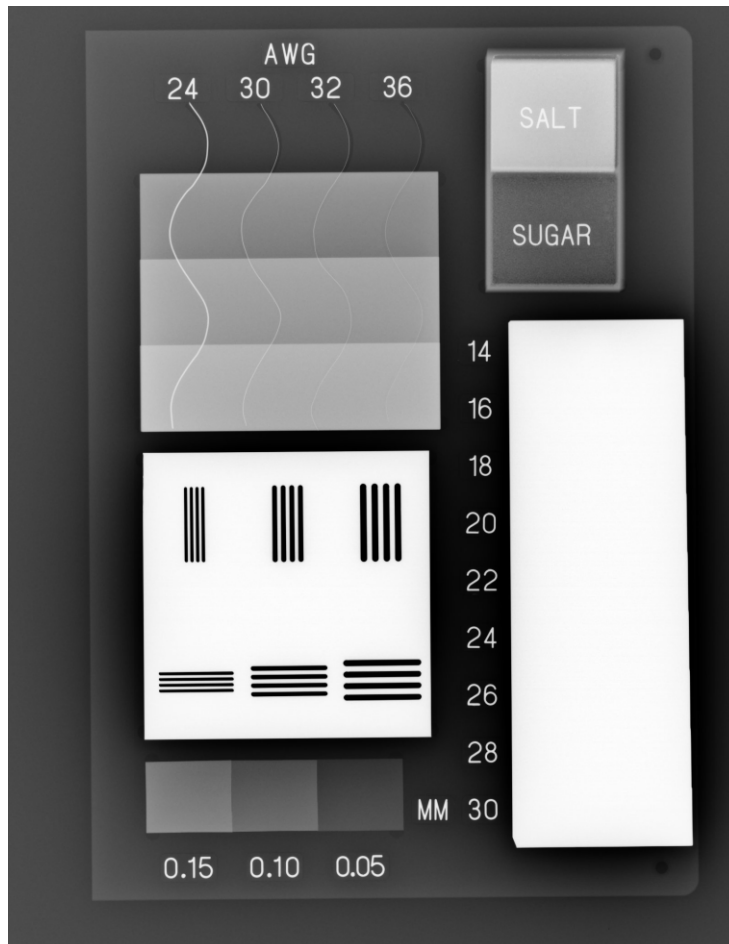


fig.5 EWSTP - radiograph