

'THE HS 1010 **EVO2**, Simple, Flexible with Superior Image Quality'



Introducing the all new **HS 1010 EVO2** Security X-Ray Inspection System. A large tunnel unit that allows for the x-raying of a wide range of oversized items. For the screening of air cargo and hold baggage, it is considered to be the preferred size choice for freight forwarders, airports, warehouses, courier companies & customs. Designed with a 1005mm x 1010mm (40"x40") tunnel size, the **HS 1010 EVO2** is one of the more sought after machines on the market.

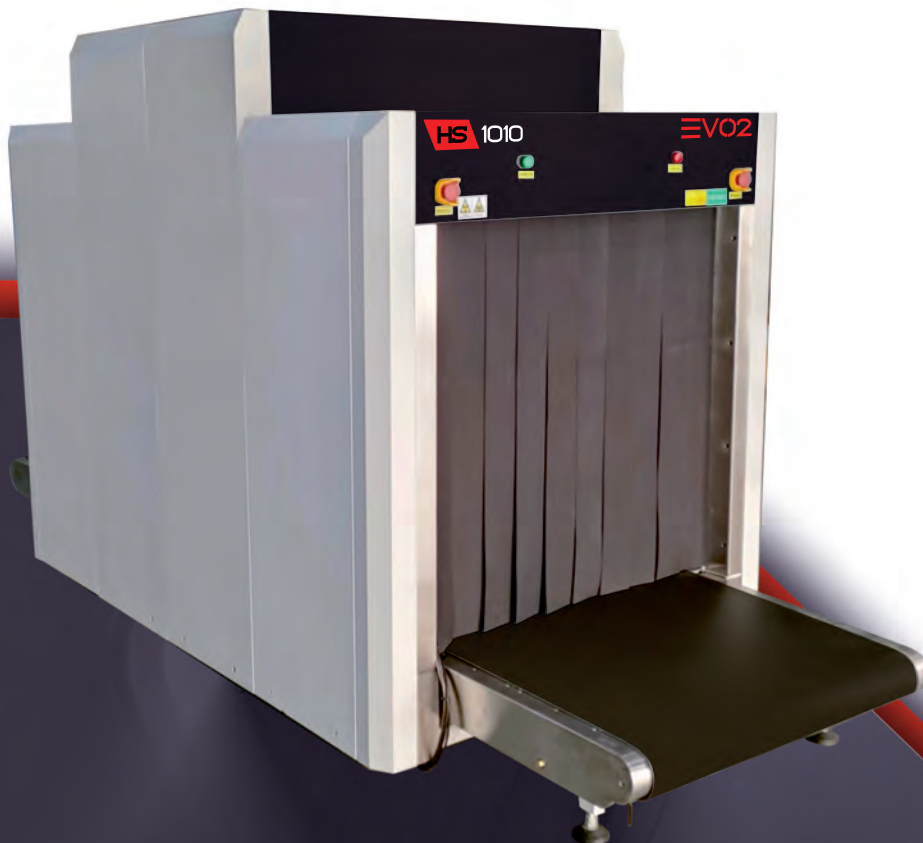
The **HS 1010 EVO2** is built with high definition detectors and state of the art photo sensors that allow for ultra-thin objects placed on the conveyor belt to be picked up and scanned. The **HS 1010 EVO2** provides picture-pure resolution with super enhanced image processing and automatic 100x screen image playback capability. The **HS 1010 EVO2** is the machine of choice for any high throughput operations. In addition to the standard configuration, the **HS 1010 EVO2** is supplied with a number of extras including TIP (Threat Image Projection), a 5 Year Warranty and 500,000 Image Archiving Capacity, touch screen interface and **AI (Assisted Imaging)**[™].

SPECIAL FEATURES

- 5 Years Parts Inclusive Warranty Only
- CIRT (Computer Item Recognition Training Software)
- Compact design
- Ultra-thin object scanning using micro photo sensors
- Self Diagnostics
- Organic / inorganic stripping (Material Discrimination)
- Automatic threat and density alert
- Network ready
- Image archiving
- TIP –Threat Image Projection

ADDITIONAL EXTRAS

- AI (Assisted Imaging)[™] Item Recognition
- Roller tables (entry/exit) built to any length
- UPS (Uninterrupted Power Supply)
- Touch Screen Interface 21" Monitor
- Tunnel Guards
- Extended Belt Speed to 0.50 M/S



'THE HS 1010 EVO2, Simple, Flexible with Superior Image Quality'

SPECIFICATIONS

GENERAL

| | |
|------------------------------|------------------------------|
| Construction: | Steel based |
| Tunnel Size: | 40" (W) x 40" (H) |
| Length / Width / Height (in) | 131" (L) 52" (W) x 70" (H) |
| | 2425 lbs (uncrated) |
| | 2866 lbs (crated) |
| Conveyor Height: | 11.81" |
| Conveyor Speed: | 0.22 meters per second |
| Maximum Conveyor Load: | 661 Lbs (evenly distributed) |
| System Noise Level: | <60 dB |

PERFORMANCE INDEX *

| | |
|--------------------------|---------------------------------------------------|
| Penetration: | 38 mm Steel (guaranteed) 40 mm Steel (typical) |
| Resolution (wire gauge): | 40 AWG (guaranteed) 42 AWG (typical) |

X-RAY GENERATOR

| | |
|-----------------------|----------------------------------------------|
| Tube Voltage: | 100 - 160 kV (adjustable) sealed oil bath |
| Tube Current: | 0.3 - 1.2mA (adjustable) |
| Cooling / Duty Cycle: | Sealed oil cooling / 100% 80 |
| Beam Launch Angle: | degrees |

OPERATIONAL INDEX

| | |
|------------------------|--------------------------------------------|
| Storage Temp/Humidity: | -20°C to 50°C 10% - 95% non-condensing |
| Working Temp/Humidity: | 0°C to 45°C 10% - 95% non-condensing |
| Working Voltage: | AC 110V (± to 10%) 50 Hz / 60 Hz ± 3 Hz |
| Power: | 1.0 kVA |
| Leakage: | <0.5µ Sv / H |
| Dose Per Inspection: | <1.5 µ Sv (typical) |
| Duty Cycle: | 100% (no burn in necessary) |

IMAGING

- Image resolution: 1280 x1024 x 24 bits
- Zoom 2x - 64x (dynamic, smooth and continuous)
- Full screen zoom (one click)
- High, low penetration
- Organic / inorganic stripping
- Picture Pure screening technology
- Super edge enhancement capability
- Threat Image Projection Library (TIP)
- Operator assist (OA), automatic threat and density alert
- High Organic Mass Alert (HOMA)
- Automatic 100x screen image recall (last in first out)
- Dual-energy technology
- Color, black, white, inverse display

IMAGE RECALL

- 500,000 Images storage capacity (standard)
- Image conversion and export to jpg, png and bmp
- Image search and simulated playback
- Printer Ready

ADDITIONAL FEATURES

- 21" High resolution touch Screen Interface
- AI (Assisted Imaging)™ Item Recognition
- Input / Exit Rollers to any length required
- Multi language support
- Network capable
- CIRTS (Computer Item Recognition Training Software)
- 5 Years Parts Inclusive Warranty Only
- Extended Belt Speed to 0.50 Meters Per Second

COMPLIANCE STANDARDS

- Complies with film safety ISO 1600 / 33 DIN high speed photographic film
- All equipment is CE (Europe) certified and manufactured to ISO 9001:2015 TUV standards, FDA 21CFR-Part 1003/1004 approved for use in the USA.
- Radiation safety: Meets all applicable laws and regulations with respect to X-ray emitting devices, with directives, 2014/30/EC, 2015/35/EC, 2006/42/EC, FDA 21CFR, SAPHRA.
- Proprietary quality management test piece: Steel step Wedge, CU wires, Shims, Organic inorganic, Belt Speed 0.20 m/s. *Approximate Values (Adjustable)

