

'The HS 6040 **EVO2** is the most popular 'checkpoint' design on the market'



The **HS 6040 EVO2** is the most popular checkpoint Baggage X-ray Machine in it's class. Designed and developed for high throughput, high security applications such as Banks, Hotels, Airports, Casinos, Government institutes and the like. The **HS 6040 EVO2** brings together a wide range of screening applications and requirements.

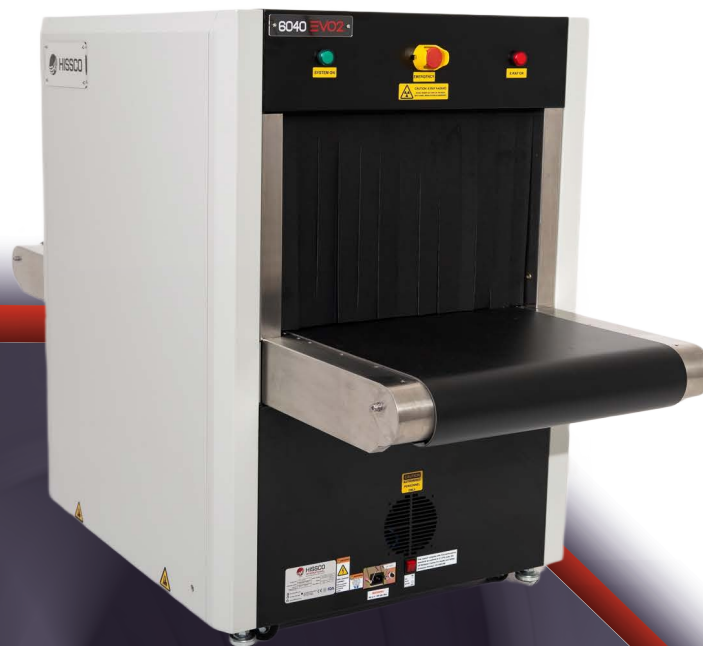
Replacing its predecessor 'Legacy Range' the all-new **HS 6040 EVO2** remains extremely popular due to its versatility and outstanding performance in the field. With all new industry leading optional features such as increased belt speed of up to 0.5m/s, touch screen interface, **AI (Assisted Imaging)™** and built-in Item Recognition Training Software, the **HS 6040 EVO2** is forging the future of next generation screening technology.

SPECIAL FEATURES

- 5 Years Parts Inclusive Warranty Only
- CIRTIS (Computer Item Recognition Training Software)
- Compact Design
- Ultra-thin object scanning using micro photo sensors
- Self Diagnostics
- Organic - Inorganic Stripping (Material Discrimination)
- Automatic threat and density alert
- Network ready
- Image archiving

ADDITIONAL EXTRAS

- TIP - Threat Image Projection
- AI (Assisted Imaging)™ Item Recognition
- Roller tables (entry/exit) built to any length
- UPS (Uninterrupted Power Supply)
- Touch Screen Interface 21" Monitor
- Tunnel Shrouds
- Extended Belt Speed to 0.50 M/S



'The HS 6040 EVO2 is the most popular 'check-point' design on the market'

SPECIFICATIONS

GENERAL

Construction:	Steel based
Tunnel Size:	24" (W) x 16" (H)
Length / Width / Height (in)	74" (L) 34" (W) x 50" (H)
	782 lbs (uncrated)
	925 lbs (crated)
Conveyor Height:	26"
Conveyor Speed:	0.20 meters per second
Maximum Conveyor Load:	440 lbs (evenly distributed)
System Noise Level:	<55 dB

PERFORMANCE INDEX *

Penetration:	36 mm Steel (guaranteed) 38 mm Steel (typical)
Resolution (wire gauge):	40 AWG (guaranteed) 42 AWG (typical)

X-RAY GENERATOR

Tube Voltage:	100 - 160 kV (Adjustable) sealed oil bath
Tube Current:	0.3 - 1.2mA (adjustable)
Cooling / Duty Cycle:	Sealed oil cooling / 100% 80
Beam Launch Angle:	degrees

OPERATIONAL INDEX

Storage Temp/Humidity:	-68°F to 122°F 10% - 95% non-condensing
Working Temp/Humidity:	32°F to 113°F 10% - 95% non-condensing
Working Voltage:	AC 110V (± to 10%) 50 Hz / 60 Hz ± 3 Hz
Power:	0.5 kVA
Leakage:	<0.5µ Sv / H
Dose Per Inspection:	<1.5 µ Sv (typical)
Duty Cycle:	100% (no burn in necessary)

IMAGING

- Image resolution: 1280 x 1024 x 24 bits
- Zoom 2 - 64 x (dynamic, smooth and continuous)
- Full screen zoom (one click)
- High, low penetration
- Organic / inorganic stripping
- Picture pure (no distortion)
- Super edge enhancement capability
- Threat Image Projection Library (TIP)
- Operator assist (OA), automatic threat and density alert
- High Organic Mass Alert (HOMA)
- Dual Energy
- Color, Black, White, Image Display

IMAGE RECALL

- 500,000 Images storage capacity (standard)
- Image conversion and export to jpg, png and bmp
- Image search and simulated playback
- Printer ready

ADDITIONAL FEATURES

- 21" High resolution Touch Screen Interface
- AI (Assisted Imaging)[™] Item Recognition
- Input / Exit Rollers to any length required
- Multi language support
- Network capable
- CIRTS (Computer Item Recognition on Training Software)
- 5 Years Parts Inclusive Warranty Only
- Extended Belt Speed to 0.50 Meters Per Second

COMPLIANCE STANDARDS

- Complies with film safety ISO 1600 / 33 DIN high speed photographic film
- All equipment is CE (Europe) certified and manufactured to ISO 9001:2015 TUV standards
- Radiation safety: Meets all applicable laws and regulations with respect to X-ray emitting devices, with directives, 2014/30/EC, 2014/35, EC 2006/42/EC, Complies with FDA 21 CFR 1020.40 radiation safety performance standards.

