

'The HS 6040DV **EVO2**, Advanced Checkpoint Screening Solution'



The **HS 6040DV (Dual View) EVO2** is an advanced checkpoint Baggage X-Ray machine designed and developed for high security applications such as Airports, Government Institutes, Embassy, Refineries, Customs, Postal Services and the like. The **HS 6040 DV EVO2** combines a wide range of advanced technologies, developed and refined to deliver the highest standards in screening and security x-ray imaging.

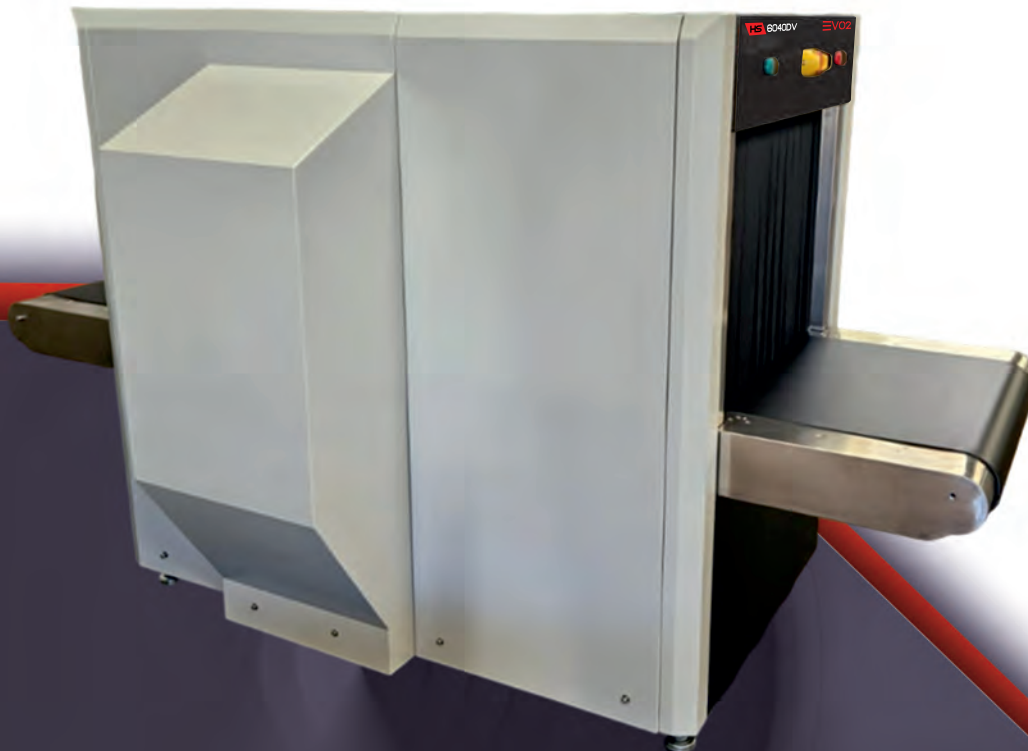
Replacing its predecessor 'Legacy Range' the all-new **HS 6040DV EVO2** remains extremely popular due to its ability to keep up with the latest in technology and outstanding performance in the field. With all new industry leading optional features such as increased belt speed of up to 0.5m/s, touch screen interface, **AI (Assisted Imaging)™** and built-in item Recognition Training Software the **HS 6040DV EVO2** is forging the future of next generation screening technology.

SPECIAL FEATURES

- 5 Years Parts Inclusive Warranty Only
- CIRT (Computer Item Recognition Training Software)
- Dual-View Imaging Technology
- Compact Design
- Self Diagnostics
- Organic / Inorganic Stripping (Material Discrimination)
- Automatic threat and density alert
- Network ready
- Image archiving

ADDITIONAL EXTRAS

- TIP - Threat Image Projection
- AI (Assisted Imaging)™ Item Recognition
- Roller tables (entry/exit) built to any length
- UPS (Uninterrupted Power Supply)
- Touch Screen Interface 21" Monitor Tunnel
- Guards
- Extended Belt Speed to 0.50 M/S



'The HS 6040DV EVO2, Advanced Checkpoint Screening Solution'

SPECIFICATIONS

GENERAL

Construction:	Steel based
Tunnel Size:	25.60" (W) x 21.65" mm (H)
Length / Width / Height (in)	91.85 (L) 70" (W) x 53" (H)
	1300 lbs (uncrated)
	1433 lbs (crated)
Conveyor Height:	26" mm
Conveyor Speed:	0.22 meters per second
Maximum Conveyor Load:	440 lbs (evenly distributed)
System Noise Level:	<55 dB

PERFORMANCE INDEX *

Penetration:	36 mm Steel (guaranteed) 38 mm Steel (typical)
Resolution (wire gauge):	40 AWG (guaranteed) 42 AWG (typical)

X-RAY GENERATOR

Tube Voltage:	100 - 160 kV (Adjustable) sealed oil bath
Tube Current:	0.3 - 1.2mA (adjustable)
Cooling / Duty Cycle:	Sealed oil cooling / 100%
Beam Launch Angle:	80 degrees
Beam Direction	(1) Vertically Upward and (2) Horizontal

OPERATIONAL INDEX

Storage Temp/Humidity:	-20°C to 50°C 10% - 95% non-condensing
Working Temp/Humidity:	0°C to 45°C 10% - 95% non-condensing
Working Voltage:	AC 110V (± to 10%) 50 Hz / 60 Hz ± 3 Hz
Power:	0.5 kVA
Leakage:	<0.5µ Sv / H
Dose Per Inspection:	<1.5 µ Sv (typical)
Duty Cycle:	100% (no burn in necessary)

IMAGING

- Image resolution: 1280 x 1024 x 24 bits
- Zoom 2 - 64 x (dynamic, smooth and continuous)
- Full screen zoom (one click)
- High, low penetration
- Organic / inorganic stripping
- Picture Pure screening technology
- Super edge enhancement capability
- Threat Image Projection Library (TIP)
- Operator assist (OA), automatic threat and density alert
- High Organic Mass Alert (HOMA)
- Automatic 100x screen image recall (last in first out)
- Dual-energy technology
- Color, black, white, inverse display

IMAGE RECALL

- 500,000 Images storage capacity (standard)
- Image conversion and export to jpg, png and bmp
- Image search and simulated playback
- Printer ready

ADDITIONAL FEATURES

- 2x21" High resolution touch Screen Interface
- AI (Assisted Imaging)™ Item Recognition
- Input / Exit Rollers to any length required
- Multi language support
- Network capable
- CIRT (Computer Item Recognition Training Software)
- 5 Years Parts Inclusive Warranty Only
- Extended Belt Speed to 0.50 Meters Per Second
- Operator Table

COMPLIANCE STANDARDS

- Complies with film safety ISO 1600 / 33 DIN high speed photographic film
 - All equipment is CE (Europe) certified and manufactured to ISO 9001:2015 TUV standards, FDA 21CFR- Part 1003/1004 approved for use in the USA.
 - Radiation safety: Meets all applicable laws and regulations with respect to X-ray emitting devices, with directives, 2014/30/EC, 2014/35/EC, 2006/42/EC, FDA 21CFR, SAPHRA.
 - Proprietary quality management test piece: Steel step Wedge, CU wires, Shims, Organic Inorganic, Belt speed 0.20 m/
- §Approximate Values (Adjustable)

