

HS 6550

Baggage & Cargo X-Ray Machine



HISSCO

'THE HS 6550 **EVO2**, is the most popular 'check-point' design on the market'



The **HS 6550 EVO2** is the leading checkpoint baggage X-ray system in its class, engineered for high-throughput, high-security environments such as banks, hotels, airports, casinos, and government facilities. Purpose-built for demanding operational needs, the **HS 6550 EVO2** integrates a comprehensive range of screening capabilities to meet diverse security requirements.

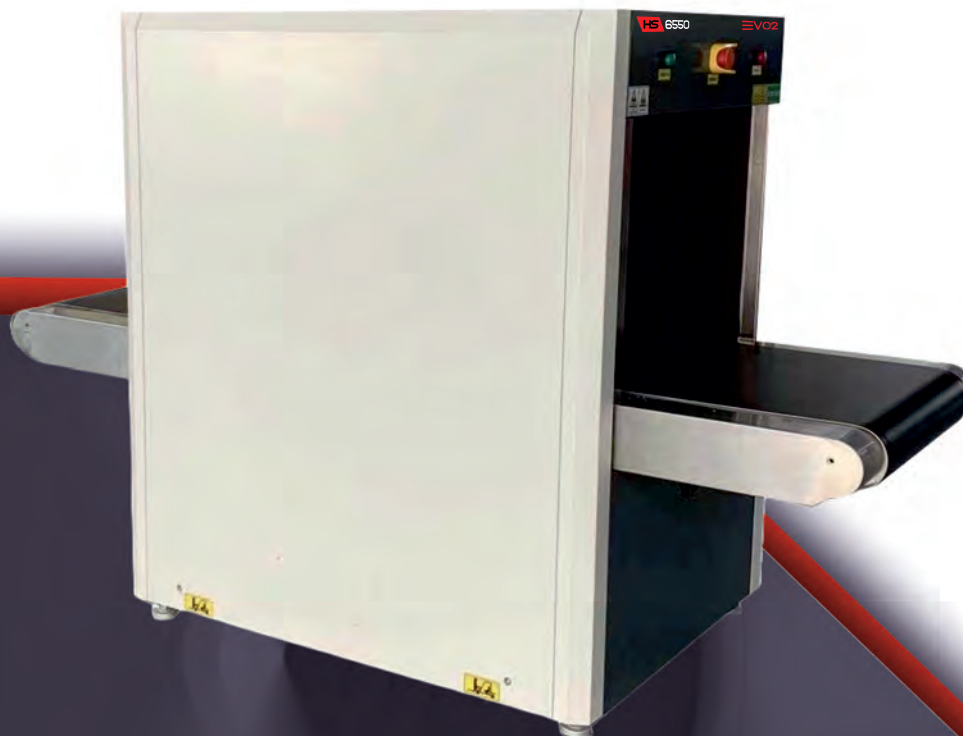
Replacing its predecessor 'Legacy Range' the all new **HS 6550 EVO2** remains extremely popular due to its versatility and outstanding performance in the field. With all new industry leading optional features such as increased belt speed of up to 0.5m/s, touch screen interface, **AI (Assisted Imaging)™** and built-in Item Recognition Training Software, the **HS 6550 EVO2** is forging the future of next generation screening technology.

SPECIAL FEATURES

- 5 Years Parts Inclusive Warranty Only
- CIRT (Computer Item Recognition Training Software)
- Compact design
- Ultra-thin object scanning using micro photo sensors
- Self Diagnostics
- Organic / inorganic stripping (Material Discrimination)
- Automatic threat and density alert
- Network ready
- Image archiving

ADDITIONAL EXTRAS

- TIP –Threat Image Projection
- AI (Assisted Imaging)™ Item Recognition
- Roller tables (entry/exit) built to any length
- UPS (Uninterrupted Power Supply)
- Touch Screen Interface 21" Monitor
- Tunnel Guards
- Extended Belt Speed to 0.50 M/S



'THE HS 6550 EVO2, is the most popular 'check-point' design on the market'

SPECIFICATIONS

GENERAL

Construction:	Steel based
Tunnel Size:	25.6" (W) x 19.88" (H)
Length / Width / Height (in)	80" (L) 35" (W) x 54" (H)
	925 lbs (uncrated)
	1146 lbs (crated)
Conveyor Height:	27.28"
Conveyor Speed:	0.22 meters per second
Maximum Conveyor Load:	440 lbs (evenly distributed)
System Noise Level:	<55 dB

PERFORMANCE INDEX *

Penetration:	36 mm Steel (guaranteed) 38 mm Steel (typical)
Resolution (wire gauge):	40 AWG (guaranteed) 42 AWG (typical)

X-RAY GENERATOR

Tube Voltage:	100 - 160 kV (adjustable) sealed oil bath
Tube Current:	0.3 - 1.2mA (adjustable)
Cooling / Duty Cycle:	Sealed oil cooling / 100% 80 degrees
Beam Launch Angle:	

OPERATIONAL INDEX

Storage Temp/Humidity:	-20°C to 50°C 10% - 95% non-condensing
Working Temp/Humidity:	0°C to 45°C 10% - 95% non-condensing
Working Voltage:	AC 110V (± to 10%) 50 Hz / 60 Hz ± 3 Hz
Power:	0.5 kVA
Leakage:	<0.5µ Sv / H
Dose Per Inspection:	<1.5 µ Sv (typical)
Duty Cycle:	100% (no burn in necessary)

IMAGING

- Image resolution: 1280 x1024 x 24 bits
- Zoom 2x - 64x (dynamic, smooth and continuous)
- Full screen zoom (one click)
- High, low penetration
- Organic / inorganic stripping
- Picture Pure screening technology
- Super edge enhancement capability
- Threat Image Projection Library (TIP)
- Operator assist (OA), automatic threat and density alert
- High Organic Mass Alert (HOMA)
- Automatic 100x screen image recall (last in first out)
- Dual-energy technology
- Color, black, white, inverse display

IMAGE RECALL

- 500,000 Images storage capacity (standard)
- Image conversion and export to jpg, png and bmp
- Image search and simulated playback
- Printer Ready

ADDITIONAL FEATURES

- 21" High resolution touch Screen Interface
- (AI) Assisted Imaging Item Recognition
- Input / Exit Rollers to any length required
- Multi language support
- Network capable
- CIRTS (Computer Item Recognition Training Software)
- 5 Years X-Ray Generator Warranty
- Extended Belt Speed to 0.50 Meters Per Second

COMPLIANCE STANDARDS

- Complies with film safety ISO 1600 / 33 DIN high speed photographic film
 - All equipment is CE (Europe) certified and manufactured to ISO 9001:2015 TUV standards, FDA 21CFR- Part 1003/1004 approved for use in the USA.
 - Radiation safety: Meets all applicable laws and regulations with respect to X-ray emitting devices, with directives, 2014/30/EC, 2014/35/EC, 2006/42/EC, FDA 21CFR, SAPHRA.
 - Proprietary quality management test piece: Steel step Wedge, CU wires, Shims, Organic Inorganic, Belt speed 0.20 m/s.
- *Approximate Values (Adjustable)

