

HS 8065

Hold Baggage & Freight X-Ray Machine



'THE HS 8065 **EVO2**, For Hold Baggage and Freight Screening Requirements'



The **HS 8065 EVO2**, is an ideal solution for hold baggage and freight screening requirements. With a tunnel size of 810mm x 660mm (31"x26"). This unit is easily integrated into existing screening facilities. The low conveyor design allows this unit to be versatile within all high security application on for oversized baggage, suitcases, parcels and the like. Designed and developed for high-transit areas such as Train Station, Banks, Hotels, Airports, Casinos, Government institutes. The HS 8065 EVO2 brings together a solution for a wide range of screening applications whilst maintaining industry leading performance and superior detection on capabilities.

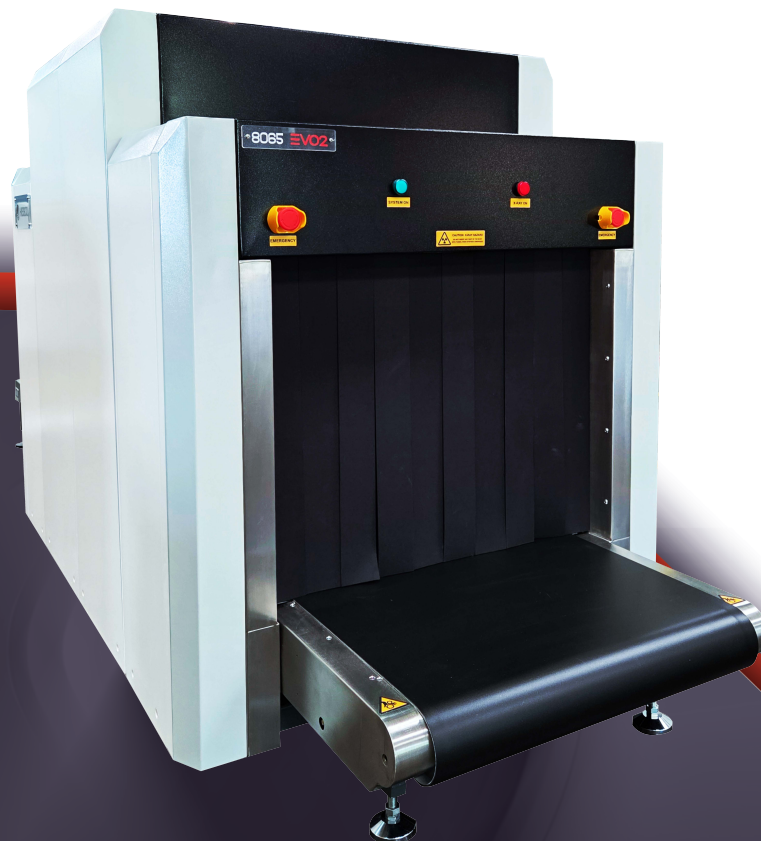
SPECIAL FEATURES

- 5 Years Parts Inclusive Warranty Only
- CIRTSS (Computer Item Recognition Training Software)
- Dual-energy high-definition detectors
- Compact design
- Self Diagnostics
- Organic / inorganic stripping (Material Discrimination)
- Automatic threat and density alert
- Network ready
- Image archiving

The all-new **HS 8065 EVO2** is an extremely popular due to its versatility and outstanding performance in the field. With all new industry leading optional features such as increased belt speed of up to 0.5m/s, touch screen interface, remote diagnostics capabilities, Artificial Intelligence (AI) and built-in item Recognition Training Software, the **HS 8065 EVO2** is forging the future of next generation technology.

ADDITIONAL EXTRAS

- TIP –Threat Image Projection
- AI- (Assisted Imaging)™ Item Recognition
- Roller tables (entry/exit) built to any length
- UPS (Uninterrupted Power Supply)
- Built-In Item Recognition Training Software
- Touch Screen Interface 21" Monitor
- Tunnel Guards
- Extended Belt Speed to 0.50 M/S





'THE HS 8065 EVO2, For Hold Baggage and Freight Screening Requirements'



SPECIFICATIONS

GENERAL

Construction:	Steel based
Tunnel Size:	810 mm (W) x 660 mm (H)
Length / Width / Height (in)	31"(W) x 26" (H) 110" (L) 58" (W) x 56" (H) 2205 lbs (uncrated) 2645 lbs (crated)
Conveyor Height:	11.81"
Conveyor Speed:	0.22 meters per second
Maximum Conveyor Load:	200 Kg (evenly distributed)
System Noise Level:	<55 dB

PERFORMANCE INDEX *

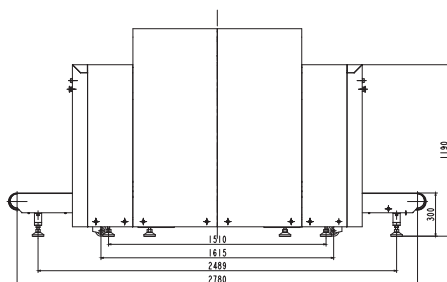
Penetration:	36 mm Steel (guaranteed) 38 mm Steel (typical)
Resolution (wire gauge):	40 AWG (guaranteed) 42 AWG (typical)

X-RAY GENERATOR

Tube Voltage:	100 - 160 kV (adjustable) sealed oil bath
Tube Current:	0.3 - 1.2mA (adjustable) Sealed
Cooling / Duty Cycle:	oil cooling / 100%
Beam Launch Angle:	(1) Vertically Downward

OPERATIONAL INDEX

Storage Temp/Humidity:	-20°C to 50°C 10% - 95% non-condensing
Working Temp/Humidity:	0°C to 45°C 10% - 95% non-condensing
Working Voltage:	AC 110V (± to 10%) 50 Hz / 60 Hz ± 3 Hz
Power:	0.5 kVA
Leakage:	<0.5µ Sv / H
Dose Per Inspection:	<1.5 µ Sv (typical)
Duty Cycle:	100% (no burn in necessary)



IMAGING

- Image resolution: 1280 x 1024 x 24 bits
- Zoom 2x - 64x (dynamic, smooth and continuous)
- Full screen zoom (one click)
- High, low penetration
- Organic / inorganic stripping
- Picture Pure screening technology
- Super edge enhancement capability
- Threat Image Projection Library (TIP)
- Operator assist (OA), automatic threat and density alert
- High Organic Mass Alert (HOMA)
- Automatic 100x screen image recall (last in first out)
- Dual-energy technology
- Colour, black, white, inverse display

IMAGE RECALL

- 500,000 Images storage capacity (standard)
- Image conversion and export to jpg, png and bmp
- Image search and simulated playback
- Printer Ready

ADDITIONAL FEATURES

- 1 x 21" High resolution touch Screen Interface
- (AI) (Assisted Imaging)™ Item Recognition
- Input / Exit Rollers to any length required
- Multi language support
- Network capable
- Training Software- Item Recognition Training Software
- 5 Years Parts Inclusive Warranty Only
- Extended Belt Speed to 0.50 Meters Per Second

COMPLIANCE STANDARDS

- Complies with film safety ISO 1600 / 33 DIN high speed photographic film
- All equipment is CE (Europe) certified and manufactured to ISO 9001:2015 TUV standards, FDA 21CFR- Part 1003/1004 approved for use in the USA.
- Radiation safety: Meets all applicable laws and regulations with respect to X-ray emitting devices, with directives, 2014/30/EC, 2014/35/EC, 2006/42/EC, FDA 21CFR, SAPHRA.

*Propriety quality management test piece: Steel Step Wedge, CU wires, Shims, Organic Inorganic, Belt speed 0.20 m/s.

*Approximate Values (Adjustable)

